

Report No.: 1

Test Time: 14.01.2020 17:29

Luminaire Property

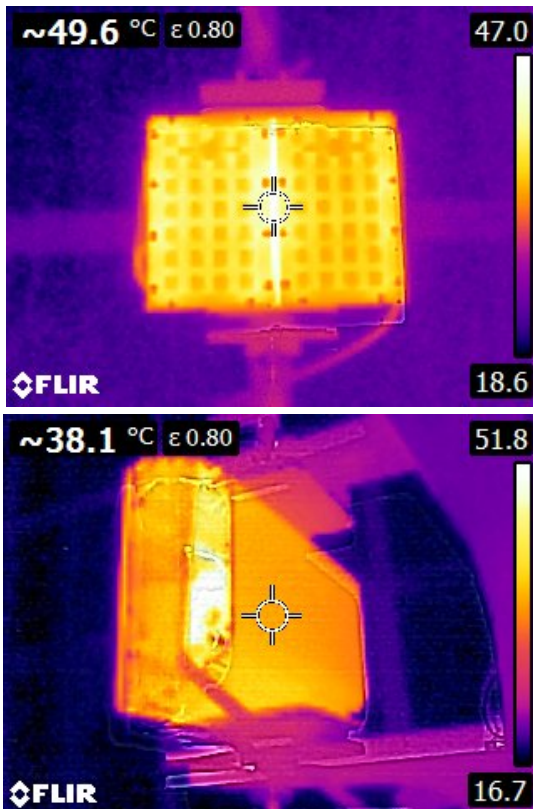
Luminaire Manufacturer:

Luminaire Description: FP 150 HE 2x28LED 1.25A 50W 5000K 150x55gr
Luminous Length (mm): 404
Luminous Width (mm): 153
Luminous Height (mm): 80
Current: 0.227 A
Power: 49.72 W
Power Factor: 0.986

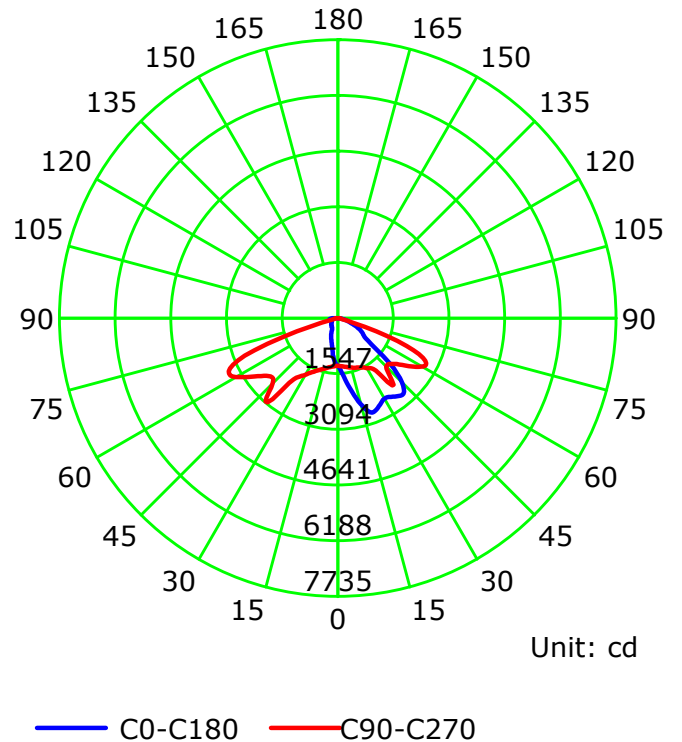
Photometric Results

CIE Class: Direct
Measurement Flux: 7274 lm
Downward Ratio: 99%
Field Angle(C0/C180,C90/C270,C45/C225,C135/315): 113.0, 148.2, 135.4, 135.7
Beam Angle(C0/C180,C90/C270,C45/C225,C135/315): 53.1, 140.0, 66.8, 64.8
Luminaire Efficacy Rating (LER): 146.35
Max. Intensity: 6188.73 cd
S/MH(C0/C180): 1.73
Total Rated Lamp Lumens: 7274.0 lm
Efficiency: 100%
Upward Ratio: 1%
Central Intensity: 1326.46 cd
Pos of Max. Intensity: H67.5 V62
S/MH(C90/C270): 2.20

Termogramma



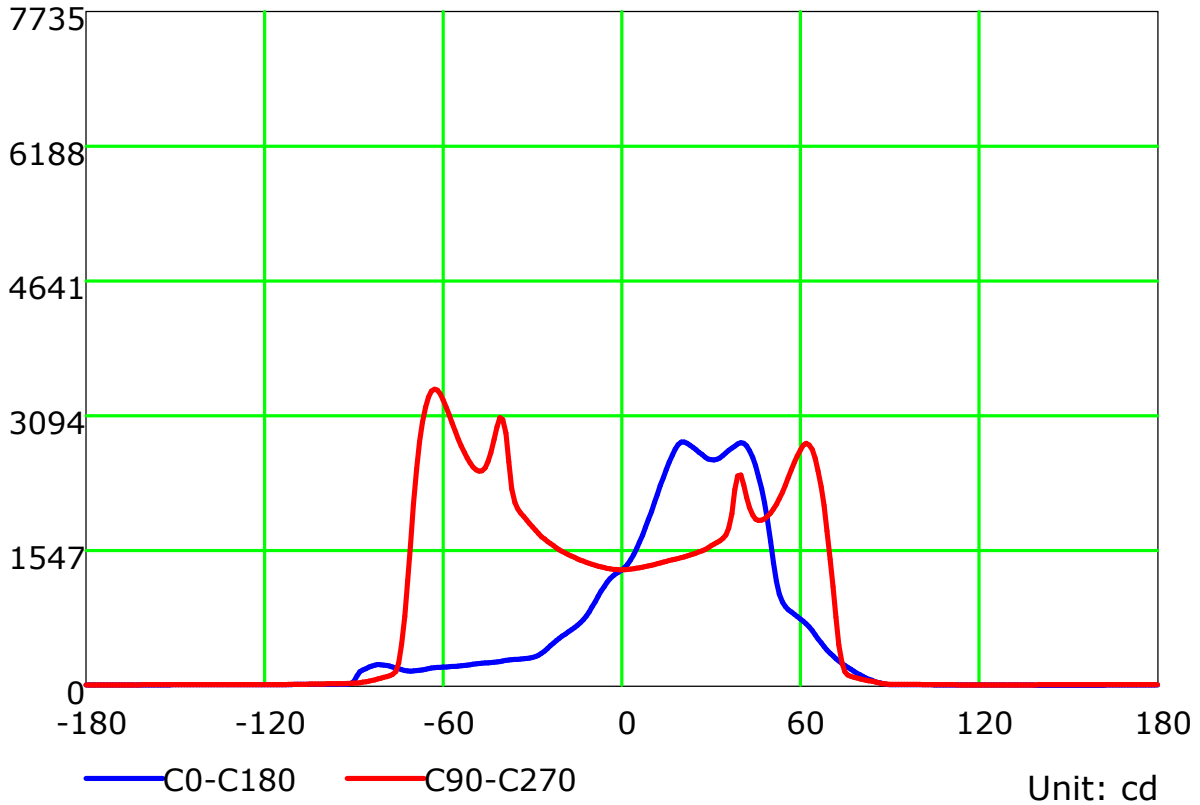
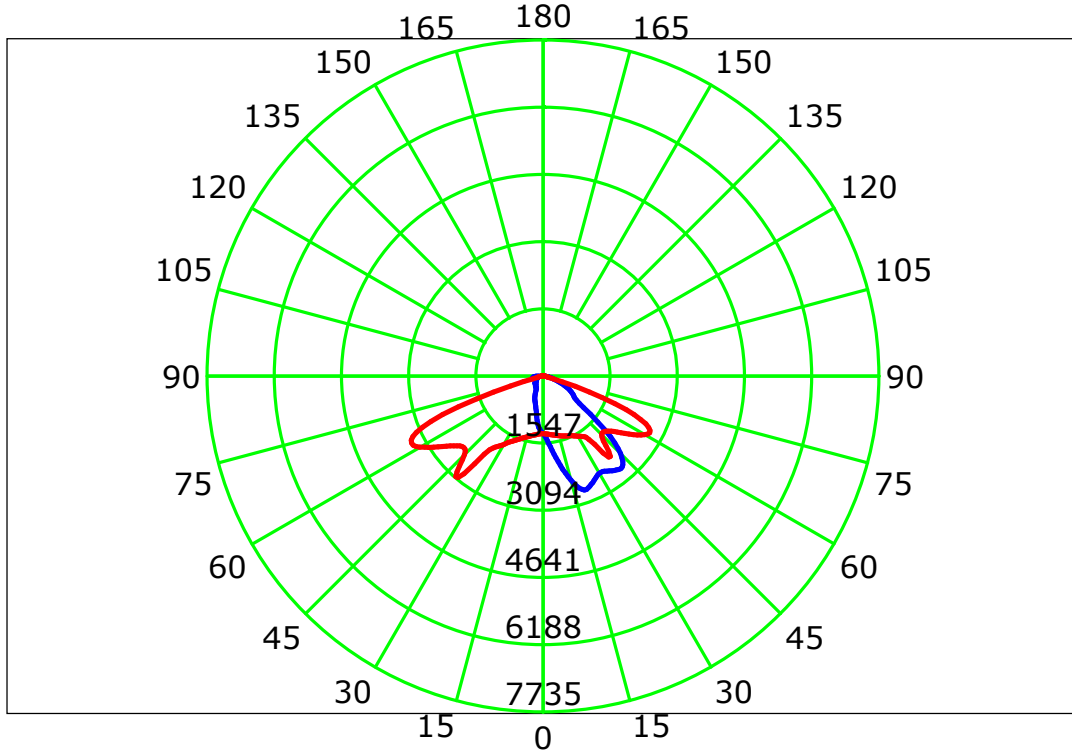
Luminous Intensity Distribution Curve



C Plane (°):0.0-360.0: 22.5
Test Lab:
Test Type: TYPE C
Temperature:
Operator:

Gamma Plane (°):0.0-180.0:1.0
Test Device: LSG-1800B
Distance: 12.677 m
Humidity:
Inspector:

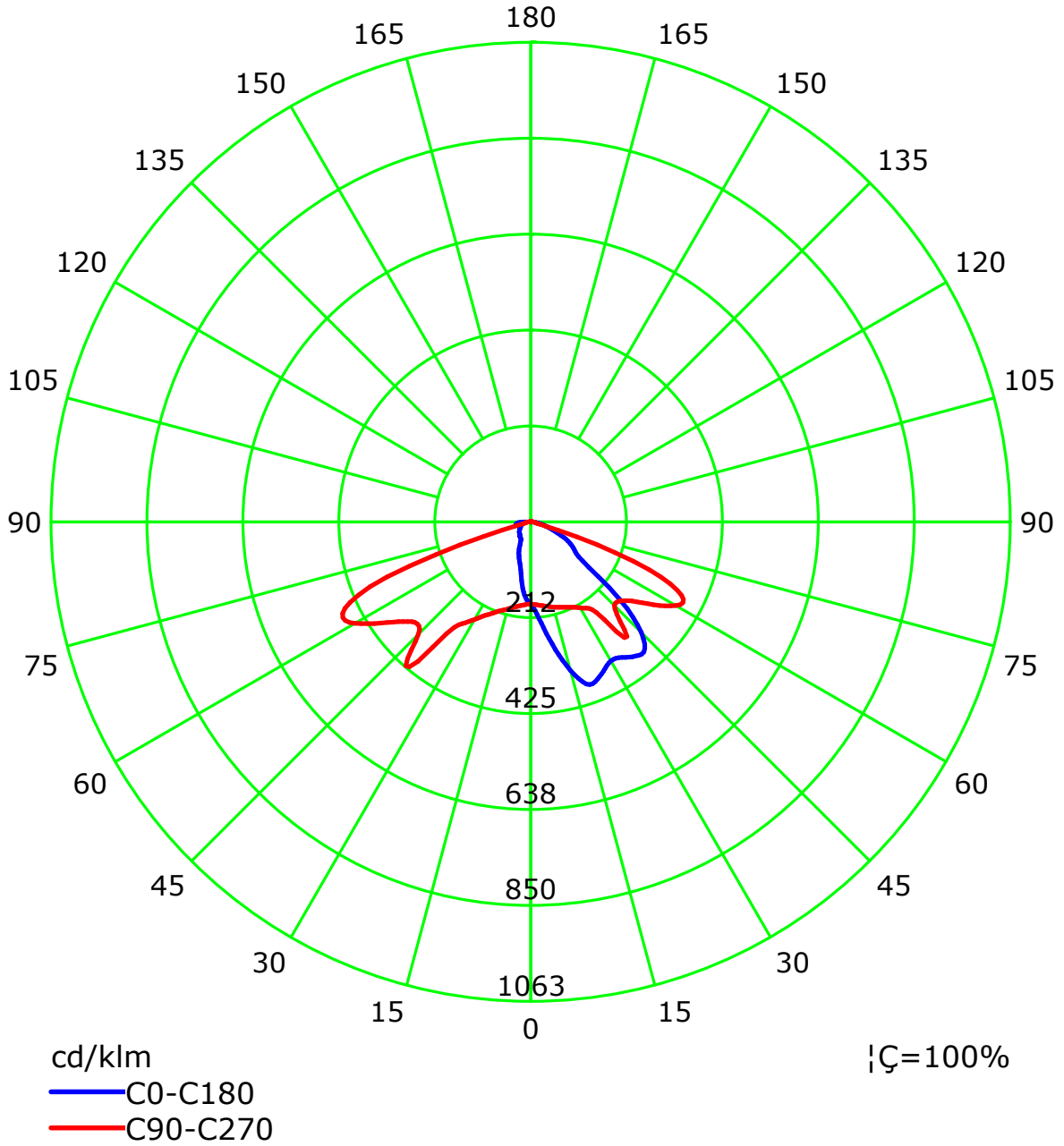
Luminous Intensity Distribution Curve



C Plane (°):0.0-360.0: 22.5
 Test Lab:
 Test Type: TYPE C
 Temperature:
 Operator:

Gamma Plane (°):0.0-180.0:1.0
 Test Device: LSG-1800B
 Distance: 12.677 m
 Humidity:
 Inspector:

Luminous Intensity Distribution Curve(cd/klm)



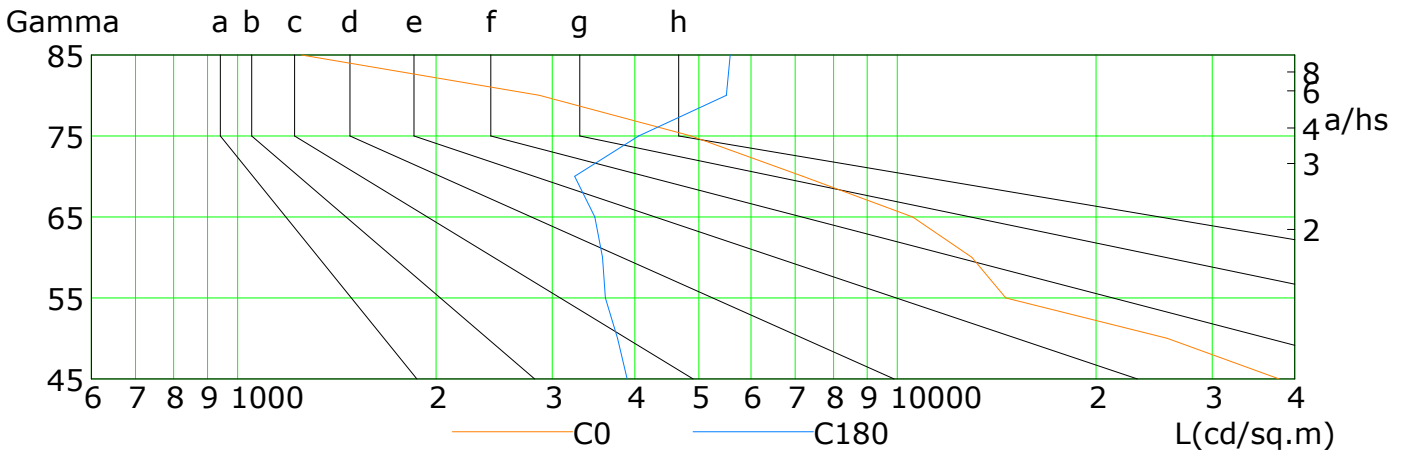
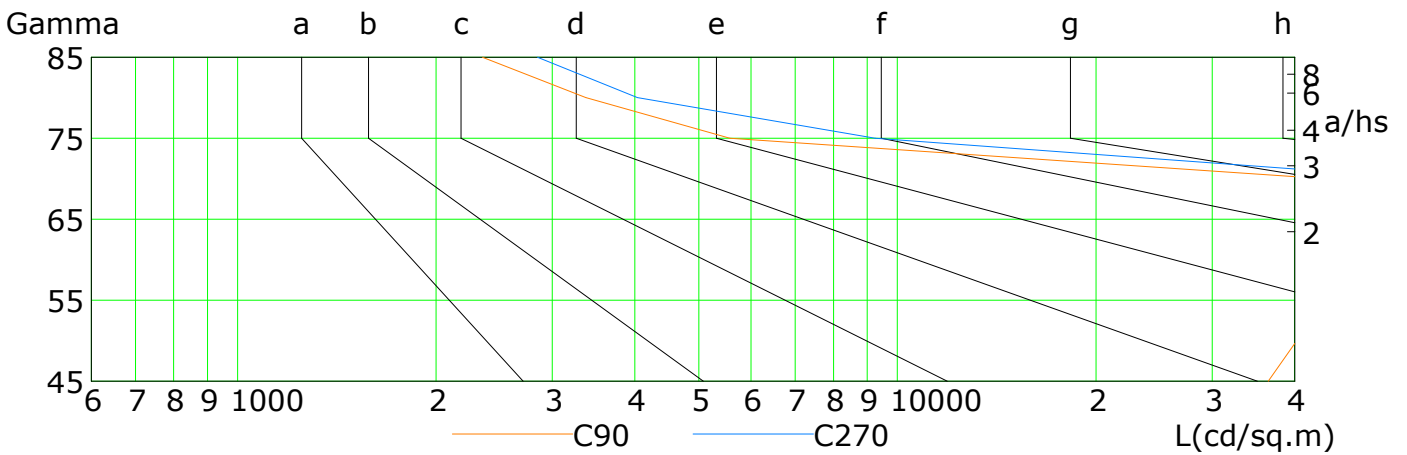
C Plane (°):0.0-360.0: 22.5
Test Lab:
Test Type: TYPE C
Temperature:
Operator:

Gamma Plane (°):0.0-180.0:1.0
Test Device: LSG-1800B
Distance: 12.677 m
Humidity:
Inspector:

Lum Limit Curve

Dazzle	Quality	Illuminance (lx)								
		2000	1000	500	<=300					
1.15	A									
1.50	B									
1.85	C									
2.20	D									
2.55	E									

a b c d e f g h

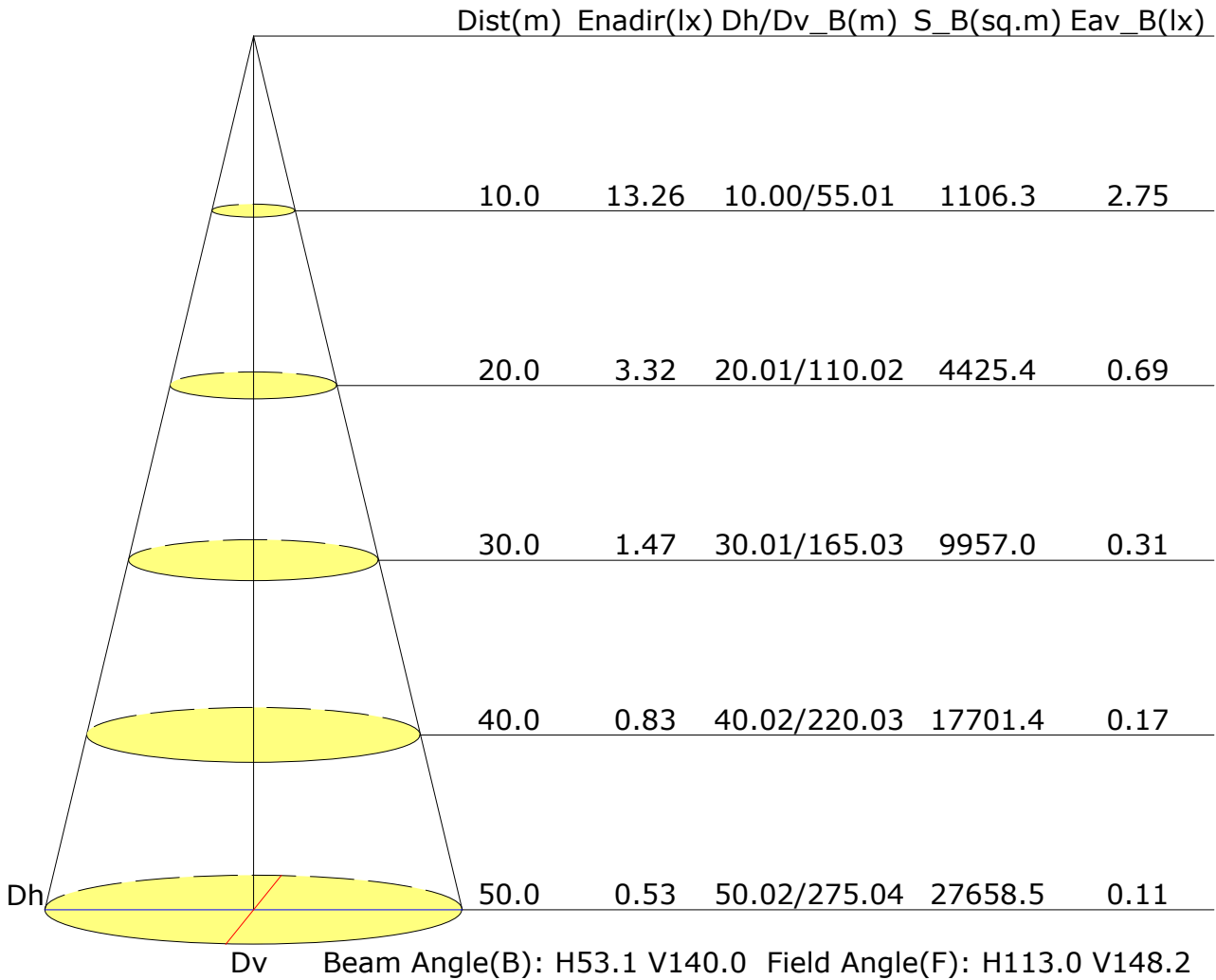


L(cd/sq.m)	G45	G50	G55	G60	G65	G70	G75	G80	G85
C0	37889	25623	14600	12973	10542	7189	4869	2867	1251
C90	36491	40292	50558	65109	70183	44281	5575	3370	2350
C180	3893	3767	3609	3575	3479	3244	4055	5507	5577
C270	49061	51059	62215	78915	88921	63786	9252	4038	2850

C Plane (°):0.0-360.0: 22.5
 Test Lab:
 Test Type: TYPE C
 Temperature:
 Operator:

Gamma Plane (°):0.0-180.0:1.0
 Test Device: LSG-1800B
 Distance: 12.677 m
 Humidity:
 Inspector:

Illuminance at a Distance



UGR Table

Reflectance:										
Ceiling (cavity)	0.7	0.7	0.5	0.5	0.3	0.7	0.7	0.5	0.5	0.3
Wall	0.5	0.3	0.5	0.3	0.3	0.5	0.3	0.5	0.3	0.3
Reference plane	0.2	0.2	0.2	0.2	0.2	0.2	0.2	0.2	0.2	0.2
Room dimensions	Viewed crosswise					Viewed endwise				
X=2H Y=2H	24.0	25.5	24.3	25.8	26.0	32.3	33.7	32.6	34.0	34.3
3H	24.3	25.6	24.6	25.9	26.2	34.0	35.4	34.4	35.7	36.0
4H	24.3	25.6	24.7	25.9	26.2	34.0	35.3	34.4	35.6	35.9
6H	24.3	25.5	24.7	25.8	26.2	33.9	35.1	34.3	35.4	35.8
8H	24.3	25.4	24.7	25.8	26.1	33.9	35.0	34.3	35.4	35.7
12H	24.3	25.3	24.6	25.7	26.0	33.8	34.9	34.2	35.3	35.6
X=4H Y=2H	25.9	27.1	26.2	27.5	27.8	32.3	33.5	32.6	33.8	34.1
3H	26.1	27.1	26.5	27.5	27.9	34.2	35.3	34.6	35.6	36.0
4H	26.1	27.1	26.5	27.4	27.8	34.2	35.2	34.6	35.5	35.9
6H	26.1	26.9	26.5	27.3	27.8	34.1	35.0	34.6	35.4	35.8
8H	26.1	26.9	26.5	27.3	27.7	34.1	34.9	34.6	35.3	35.7
12H	26.1	26.8	26.5	27.2	27.7	34.1	34.8	34.5	35.2	35.7
X=8H Y=4H	26.6	27.4	27.1	27.8	28.3	34.1	34.9	34.6	35.3	35.7
6H	26.7	27.3	27.1	27.7	28.2	34.1	34.7	34.5	35.1	35.6
8H	26.7	27.2	27.2	27.7	28.2	34.0	34.6	34.5	35.1	35.6
12H	26.6	27.1	27.2	27.6	28.1	34.0	34.5	34.5	35.0	35.5
X=12H Y=4H	26.6	27.3	27.1	27.7	28.2	34.1	34.8	34.5	35.2	35.7
6H	26.7	27.2	27.2	27.7	28.2	34.0	34.6	34.5	35.1	35.6
8H	26.7	27.2	27.2	27.6	28.2	34.0	34.5	34.5	35.0	35.5
Variations with the observer position at spacings:										
S=1.0H	+1.2/-2.3					+0.5/-0.5				
S=1.5H	+2.4/-4.3					+1.9/-2.5				
S=2.0H	+3.7/-5.0					+2.2/-3.3				

Calculate in accordance with CIE Pub.117. The table is revised with $7274lm$ ($8\log(F/F_0) = 6.9$).

C Plane (°):0.0-360.0: 22.5
 Test Lab:
 Test Type: TYPE C
 Temperature:
 Operator:

Gamma Plane (°):0.0-180.0:1.0
 Test Device: LSG-1800B
 Distance: 12.677 m
 Humidity:
 Inspector:

Utilisation Factor Table(Floor cavity)

Utilisation Factors UF(F)			SHR NOM = 1.75									
Room Reflectance			Room Index(RI)									
Ceiling	Wall	Floor	0.75	1.00	1.25	1.50	2.00	2.50	3.00	4.00	5.00	
0.70	0.50	0.20	NA	0.64	0.72	0.78	0.86	0.91	0.95	0.99	1.02	
	0.30		NA	0.56	0.64	0.71	0.80	0.86	0.90	0.95	0.99	
	0.20		NA	0.50	0.59	0.66	0.75	0.81	0.86	0.92	0.96	
0.50	0.50	0.20	NA	0.62	0.69	0.75	0.83	0.88	0.91	0.95	0.98	
	0.30		NA	0.55	0.63	0.69	0.78	0.83	0.87	0.92	0.95	
	0.20		NA	0.49	0.58	0.64	0.73	0.79	0.83	0.89	0.92	
0.30	0.50	0.20	NA	0.60	0.67	0.73	0.80	0.84	0.87	0.91	0.94	
	0.30		NA	0.54	0.61	0.68	0.76	0.81	0.84	0.89	0.92	
	0.20		NA	0.49	0.57	0.63	0.72	0.77	0.81	0.86	0.89	
0.00	0.00	0.00	NA	0.46	0.54	0.60	0.68	0.73	0.77	0.82	0.85	
<p>Rating:50W Photometrically tested without ceiling board. Multiply UF values by service correction factors Calculate in accordance with CIBSE Technical Memorandum NO.5 1980</p>												

Utilisation Factor Table(Wall)

Utilisation Factors UF(W)			SHR NOM = 1.75									
Room Reflectance			Room Index(RI)									
Ceiling	Wall	Floor	0.75	1.00	1.25	1.50	2.00	2.50	3.00	4.00	5.00	
0.70	0.50	0.20	NA	0.84	0.71	0.61	0.47	0.39	0.33	0.26	0.21	
	0.30		NA	0.72	0.62	0.54	0.43	0.36	0.31	0.24	0.20	
	0.20		NA	0.63	0.55	0.48	0.39	0.33	0.29	0.23	0.19	
0.50	0.50	0.20	NA	0.81	0.68	0.58	0.45	0.41	0.32	0.24	0.20	
	0.30		NA	0.70	0.60	0.52	0.41	0.34	0.30	0.23	0.19	
	0.20		NA	0.62	0.54	0.47	0.38	0.32	0.28	0.22	0.18	
0.30	0.50	0.20	NA	0.78	0.65	0.56	0.43	0.35	0.30	0.23	0.19	
	0.30		NA	0.69	0.58	0.50	0.40	0.33	0.28	0.22	0.18	
	0.20		NA	0.61	0.53	0.46	0.37	0.31	0.27	0.21	0.18	
0.00	0.00	0.00	0.98	0.52	0.44	0.38	0.30	0.25	0.21	0.16	0.13	
<p>Rating:50W Photometrically tested without ceiling board. Multiply UF values by service correction factors Calculate in accordance with CIBSE Technical Memorandum NO.5 1980</p>												

Utilisation Factor Table(Ceiling cavity)

Utilisation Factors UF(C)			SHR NOM = 1.75								
Room Reflectance			Room Index(RI)								
Ceiling	Wall	Floor	0.75	1.00	1.25	1.50	2.00	2.50	3.00	4.00	5.00
0.70	0.50	0.20	NA	0.18	0.19	0.20	0.20	0.21	0.21	0.22	0.22
	0.30		NA	0.12	0.13	0.14	0.16	0.17	0.18	0.19	0.20
	0.20		NA	0.07	0.08	0.10	0.12	0.13	0.14	0.16	0.17
0.50	0.50	0.20	NA	0.18	0.18	0.19	0.20	0.20	0.20	0.21	0.21
	0.30		NA	0.11	0.13	0.14	0.15	0.16	0.17	0.18	0.19
	0.20		NA	0.07	0.08	0.09	0.11	0.13	0.14	0.16	0.17
0.30	0.50	0.20	NA	0.17	0.18	0.18	0.19	0.19	0.20	0.20	0.20
	0.30		NA	0.11	0.12	0.13	0.15	0.16	0.17	0.18	0.18
	0.20		NA	0.07	0.08	0.09	0.11	0.13	0.14	0.15	0.16
0.00	0.00	0.00	0.01	0.01	0.01	0.01	0.01	0.01	0.01	0.01	0.01
<p>Rating:50W Photometrically tested without ceiling board. Multiply UF values by service correction factors Calculate in accordance with CIBSE Technical Memorandum NO.5 1980</p>											