

Report No.: 1

Test Time: 14.11.2019 19:45

## Luminaire Property

Luminaire Manufacturer:

Luminaire Description: FG 595 (80) 24LED 0,3A 32W 4000K microprisma Hygiene Griliyto

Luminous Length (mm): 595

Luminous Width (mm): 595

Luminous Height (mm): 80

Voltage: 221.4 V

Current: 0.151 A

Power: 32.88 W

Power Factor: 0.978

## Photometric Results

CIE Class: Direct

Total Rated Lamp Lumens: 4069.2 lm

Measurement Flux: 4069.2 lm

Efficiency: 100%

Downward Ratio: 99%

Upward Ratio: 1%

Field Angle(C0/C180,C90/C270,C45/C225,C135/315): 162.1, 158.8, 151.4, 152.1

Beam Angle(C0/C180,C90/C270,C45/C225,C135/315): 82.9, 79.0, 77.1, 77.0

Luminaire Efficacy Rating (LER): 123.81

Central Intensity: 2024.9 cd

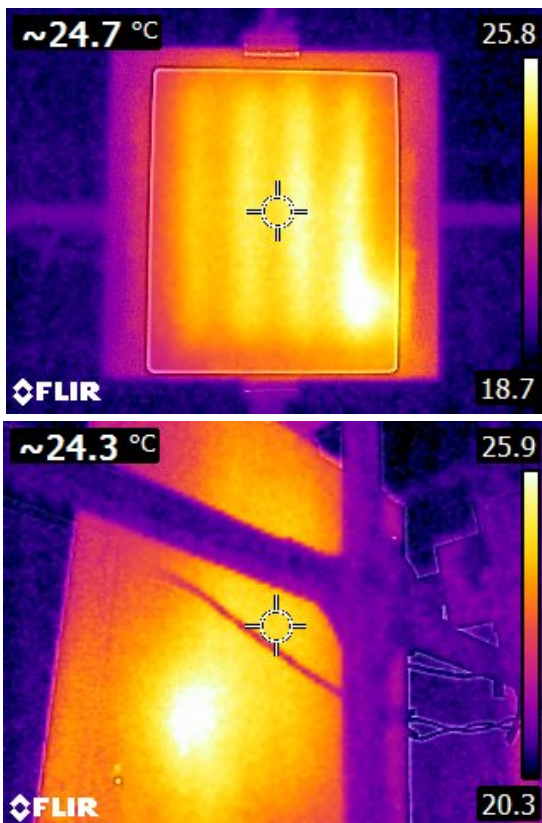
Max. Intensity: 2026.9 cd

Pos of Max. Intensity: H315 V1

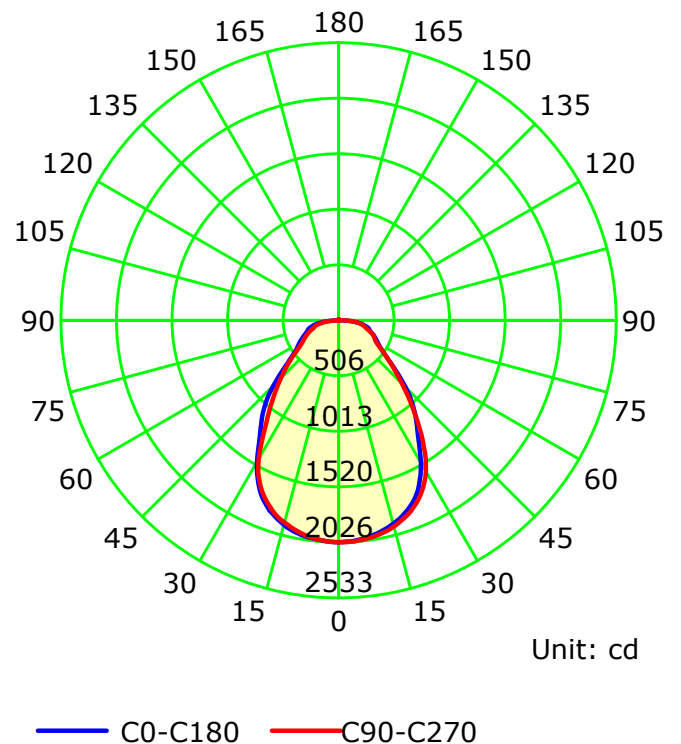
S/MH(C0/C180): 1.12

S/MH(C90/C270): 1.14

Termogramma



Luminous Intensity Distribution Curve



C Plane (°):0.0-360.0: 22.5

Gamma Plane (°):0.0-180.0:1.0

Test Lab:

Test Device: LSG-1800B

Test Type: TYPE C

Distance: 12.677 m

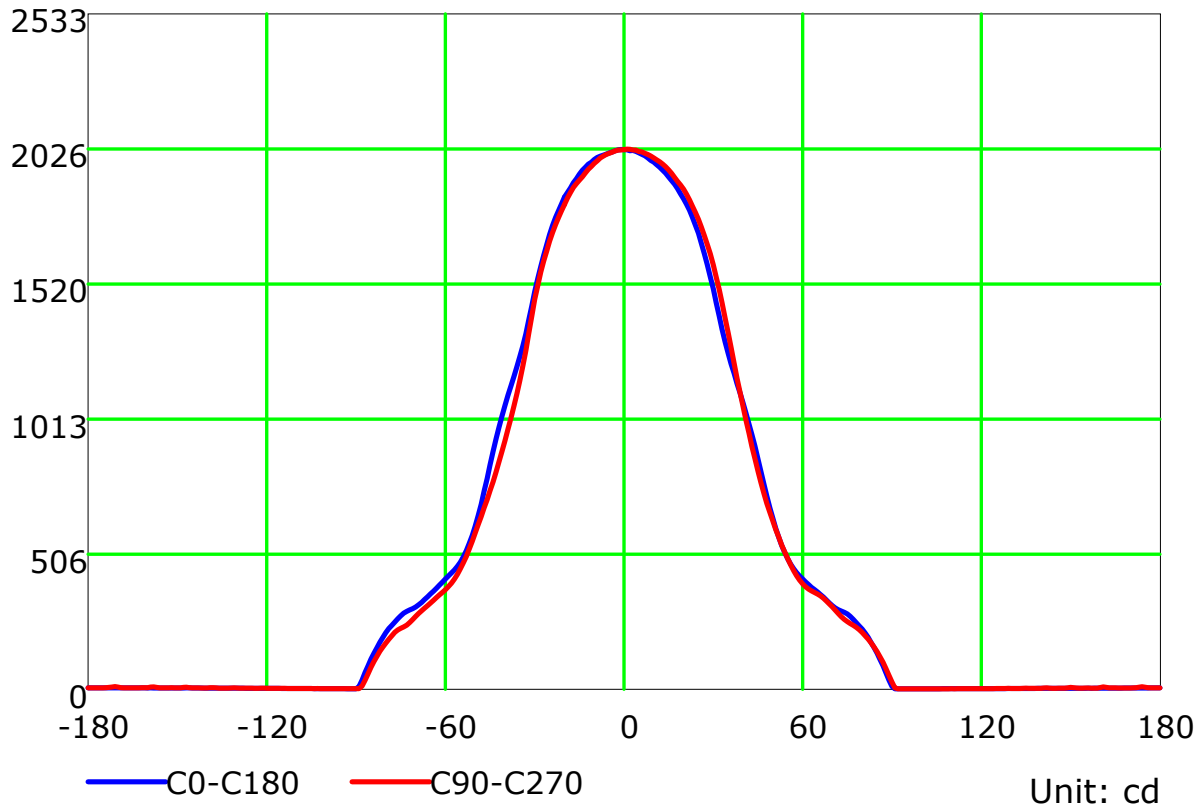
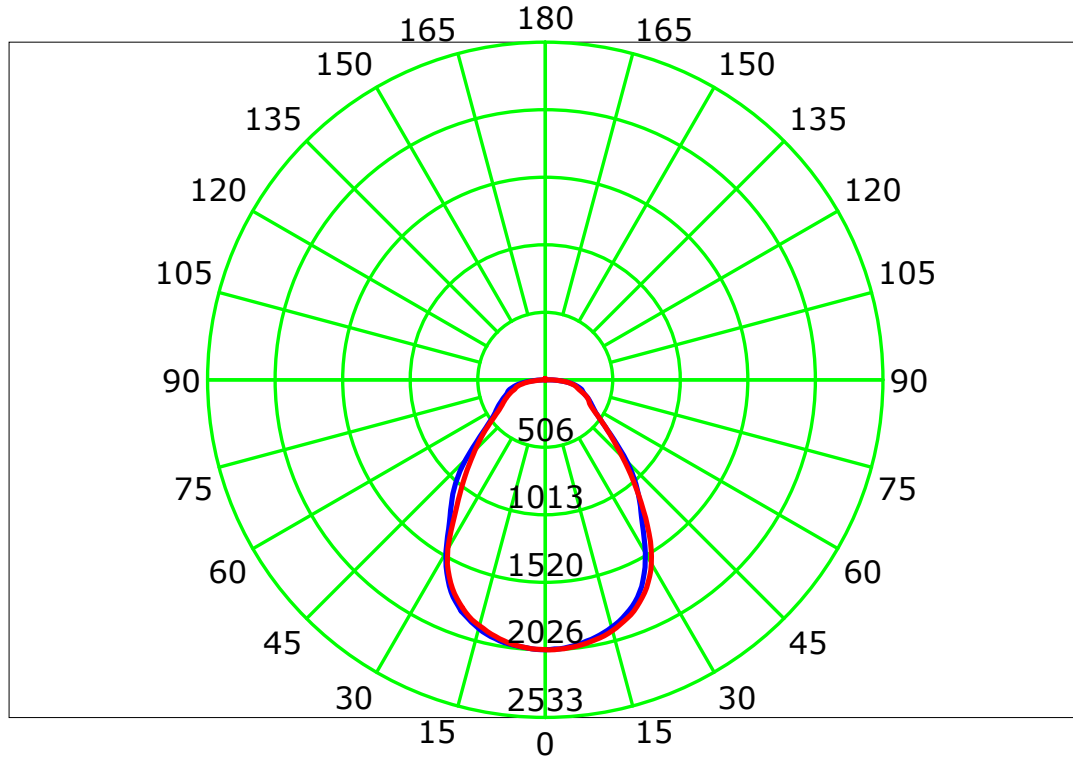
Temperature:

Humidity:

Operator:

Inspector:

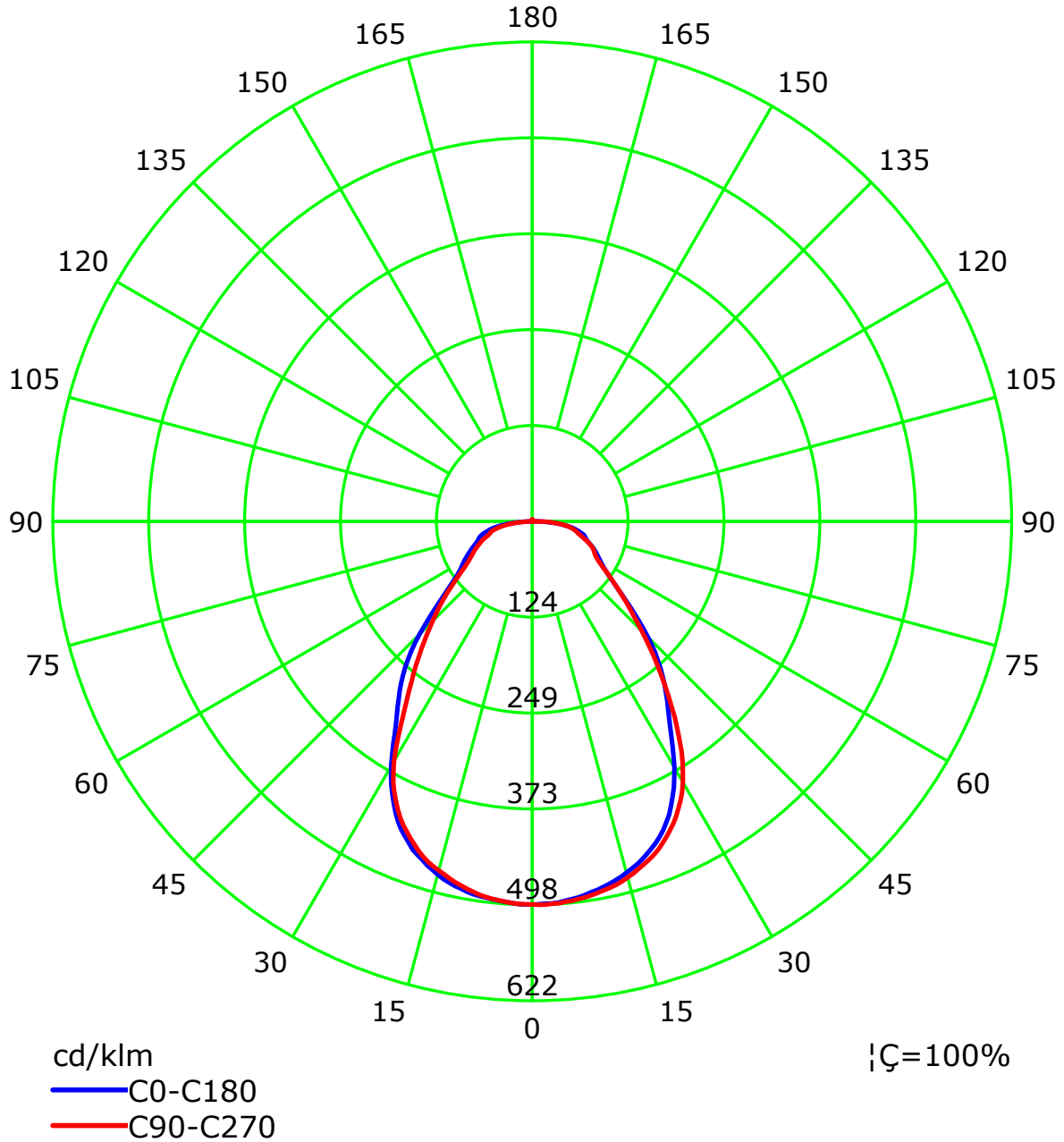
## Luminous Intensity Distribution Curve



C Plane (°):0.0-360.0: 22.5  
 Test Lab:  
 Test Type: TYPE C  
 Temperature:  
 Operator:

Gamma Plane (°):0.0-180.0:1.0  
 Test Device: LSG-1800B  
 Distance: 12.677 m  
 Humidity:  
 Inspector:

## Luminous Intensity Distribution Curve(cd/klm)



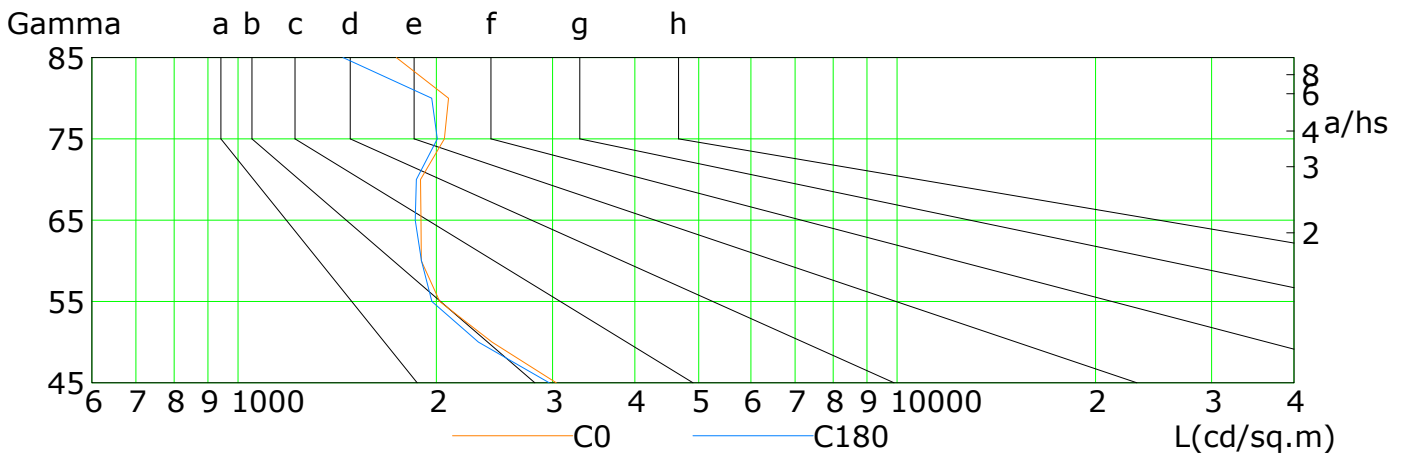
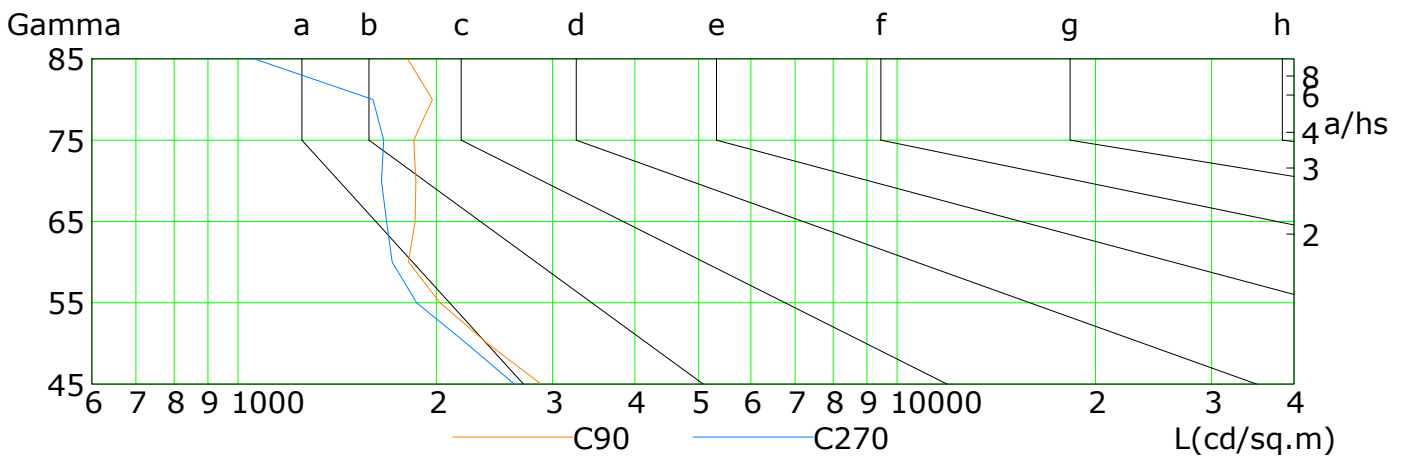
C Plane (°):0.0-360.0: 22.5  
 Test Lab:  
 Test Type: TYPE C  
 Temperature:  
 Operator:

Gamma Plane (°):0.0-180.0:1.0  
 Test Device: LSG-1800B  
 Distance: 12.677 m  
 Humidity:  
 Inspector:

## Lum Limit Curve

Dazzle	Quality	Illuminance (lx)							
		2000	1000	500	<=300				
1.15	A								
1.50	B								
1.85	C								
2.20	D								
2.55	E								

a b c d e f g h



L(cd/sq.m)	G45	G50	G55	G60	G65	G70	G75	G80	G85
C0	3040	2430	2023	1897	1894	1891	2056	2086	1739
C90	2882	2390	2026	1814	1856	1861	1848	1972	1809
C180	2966	2316	1968	1898	1857	1864	2006	1967	1443
C270	2625	2221	1867	1714	1681	1651	1664	1603	1058

C Plane (°):0.0-360.0: 22.5

Test Lab:

Test Type: TYPE C

Temperature:

Operator:

Gamma Plane (°):0.0-180.0:1.0

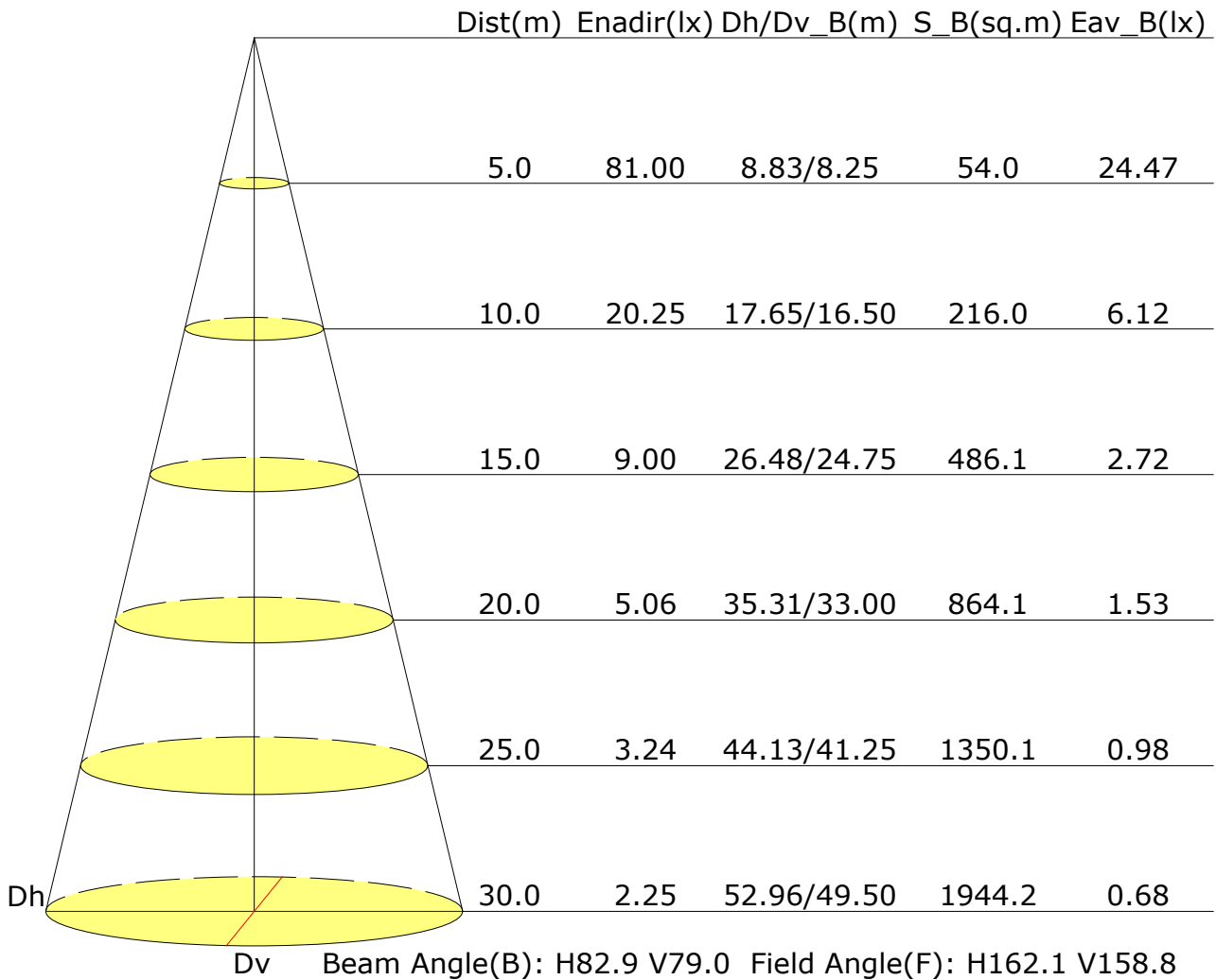
Test Device: LSG-1800B

Distance: 12.677 m

Humidity:

Inspector:

## Illuminance at a Distance



## UGR Table

Reflectance:										
Ceiling (cavity)	0.7	0.7	0.5	0.5	0.3	0.7	0.7	0.5	0.5	0.3
Wall	0.5	0.3	0.5	0.3	0.3	0.5	0.3	0.5	0.3	0.3
Reference plane	0.2	0.2	0.2	0.2	0.2	0.2	0.2	0.2	0.2	0.2
Room dimensions	Viewed crosswise					Viewed endwise				
X=2H Y=2H	14.3	15.6	14.6	15.8	16.0	14.1	15.3	14.4	15.6	15.8
3H	15.8	16.9	16.1	17.2	17.5	15.5	16.6	15.8	16.9	17.2
4H	16.6	17.7	17.0	18.0	18.3	16.2	17.3	16.5	17.6	17.9
6H	17.5	18.5	17.8	18.8	19.1	16.9	17.9	17.3	18.3	18.6
8H	17.8	18.8	18.2	19.1	19.5	17.2	18.2	17.6	18.5	18.9
12H	18.1	19.0	18.5	19.4	19.7	17.5	18.4	17.9	18.7	19.1
X=4H Y=2H	14.7	15.8	15.1	16.1	16.4	14.5	15.6	14.9	15.9	16.2
3H	16.4	17.4	16.8	17.7	18.1	16.2	17.1	16.6	17.4	17.8
4H	17.5	18.3	17.9	18.7	19.0	17.0	17.9	17.5	18.3	18.6
6H	18.5	19.2	18.9	19.6	20.0	17.9	18.7	18.4	19.1	19.5
8H	18.9	19.6	19.4	20.0	20.5	18.3	19.0	18.8	19.4	19.9
12H	19.3	19.9	19.7	20.3	20.8	18.6	19.3	19.1	19.7	20.1
X=8H Y=4H	17.7	18.4	18.2	18.8	19.3	17.4	18.0	17.8	18.5	18.9
6H	18.9	19.5	19.4	19.9	20.4	18.4	19.0	18.9	19.4	19.9
8H	19.5	20.0	20.0	20.4	20.9	18.9	19.4	19.4	19.9	20.3
12H	19.9	20.3	20.4	20.8	21.3	19.3	19.7	19.8	20.2	20.7
X=12H Y=4H	17.7	18.4	18.2	18.8	19.3	17.4	18.0	17.9	18.5	18.9
6H	19.0	19.5	19.5	19.9	20.4	18.5	19.0	19.0	19.5	20.0
8H	19.6	20.0	20.1	20.5	21.0	19.0	19.5	19.5	19.9	20.4
Variations with the observer position at spacings:										
S=1.0H	+0.3/-0.3					+0.3/-0.3				
S=1.5H	+0.4/-0.6					+0.4/-0.7				
S=2.0H	+0.7/-0.9					+0.5/-0.9				

Calculate in accordance with CIE Pub.117. The table is revised with 4069Im ( $8\log(F/F_0) = 4.9$ ).

## Utilisation Factor Table(Floor cavity)

Utilisation Factors UF(F)			SHR NOM = 1.00									
Room Reflectance			Room Index(RI)									
Ceiling	Wall	Floor	0.75	1.00	1.25	1.50	2.00	2.50	3.00	4.00	5.00	
0.70	0.50	0.20	0.62	0.72	0.78	0.83	0.89	0.94	0.97	1.01	1.04	
	0.30		0.55	0.65	0.71	0.76	0.84	0.89	0.92	0.97	1.01	
	0.20		0.50	0.59	0.66	0.71	0.79	0.84	0.88	0.94	0.98	
0.50	0.50	0.20	0.61	0.70	0.76	0.80	0.86	0.90	0.93	0.97	1.00	
	0.30		0.54	0.63	0.70	0.75	0.81	0.86	0.89	0.94	0.97	
	0.20		0.50	0.59	0.65	0.70	0.77	0.82	0.86	0.91	0.94	
0.30	0.50	0.20	0.59	0.68	0.73	0.78	0.83	0.87	0.90	0.93	0.96	
	0.30		0.54	0.62	0.68	0.73	0.79	0.84	0.87	0.91	0.94	
	0.20		0.49	0.58	0.64	0.69	0.76	0.80	0.84	0.88	0.91	
0.00	0.00	0.00	0.47	0.56	0.61	0.66	0.72	0.77	0.80	0.84	0.87	
<p>Rating:33W Photometrically tested without ceiling board.            Multiply UF values by service correction factors            Calculate in accordance with CIBSE Technical Memorandum NO.5 1980</p>												

## Utilisation Factor Table(Wall)

Utilisation Factors UF(W)			SHR NOM = 1.00									
Room Reflectance			Room Index(RI)									
Ceiling	Wall	Floor	0.75	1.00	1.25	1.50	2.00	2.50	3.00	4.00	5.00	
0.70	0.50	0.20	0.91	0.76	0.65	0.57	0.45	0.38	0.33	0.26	0.21	
	0.30		0.76	0.65	0.56	0.50	0.41	0.35	0.30	0.24	0.20	
	0.20		0.65	0.56	0.50	0.45	0.37	0.32	0.28	0.23	0.19	
0.50	0.50	0.20	0.88	0.72	0.62	0.54	0.43	0.40	0.31	0.24	0.20	
	0.30		0.74	0.63	0.55	0.48	0.40	0.33	0.29	0.23	0.19	
	0.20		0.65	0.56	0.49	0.44	0.36	0.31	0.27	0.22	0.18	
0.30	0.50	0.20	0.85	0.69	0.59	0.52	0.41	0.34	0.29	0.23	0.19	
	0.30		0.73	0.61	0.53	0.47	0.38	0.32	0.28	0.22	0.18	
	0.20		0.64	0.55	0.48	0.43	0.35	0.30	0.26	0.21	0.18	
0.00	0.00	0.00	0.53	0.44	0.38	0.34	0.28	0.23	0.20	0.16	0.13	
<p>Rating:33W Photometrically tested without ceiling board.</p> <p>Multiply UF values by service correction factors</p> <p>Calculate in accordance with CIBSE Technical Memorandum NO.5 1980</p>												



## Utilisation Factor Table(Ceiling cavity)

Utilisation Factors UF(C)			SHR NOM = 1.00									
Room Reflectance			Room Index(RI)									
Ceiling	Wall	Floor	0.75	1.00	1.25	1.50	2.00	2.50	3.00	4.00	5.00	
0.70	0.50	0.20	0.16	0.18	0.18	0.19	0.20	0.21	0.21	0.22	0.22	
	0.30		0.10	0.12	0.13	0.14	0.16	0.17	0.18	0.19	0.20	
	0.20		0.05	0.07	0.09	0.10	0.12	0.13	0.15	0.16	0.17	
0.50	0.50	0.20	0.16	0.17	0.18	0.19	0.19	0.20	0.20	0.21	0.21	
	0.30		0.10	0.11	0.13	0.14	0.15	0.16	0.17	0.18	0.19	
	0.20		0.05	0.07	0.08	0.10	0.12	0.13	0.14	0.16	0.17	
0.30	0.50	0.20	0.15	0.16	0.17	0.18	0.19	0.19	0.20	0.20	0.20	
	0.30		0.10	0.11	0.12	0.13	0.15	0.16	0.17	0.18	0.18	
	0.20		0.05	0.07	0.08	0.10	0.11	0.13	0.14	0.15	0.16	
0.00	0.00	0.00	0.01	0.01	0.01	0.01	0.01	0.01	0.01	0.01	0.01	
<p>Rating:33W Photometrically tested without ceiling board.            Multiply UF values by service correction factors            Calculate in accordance with CIBSE Technical Memorandum NO.5 1980</p>												